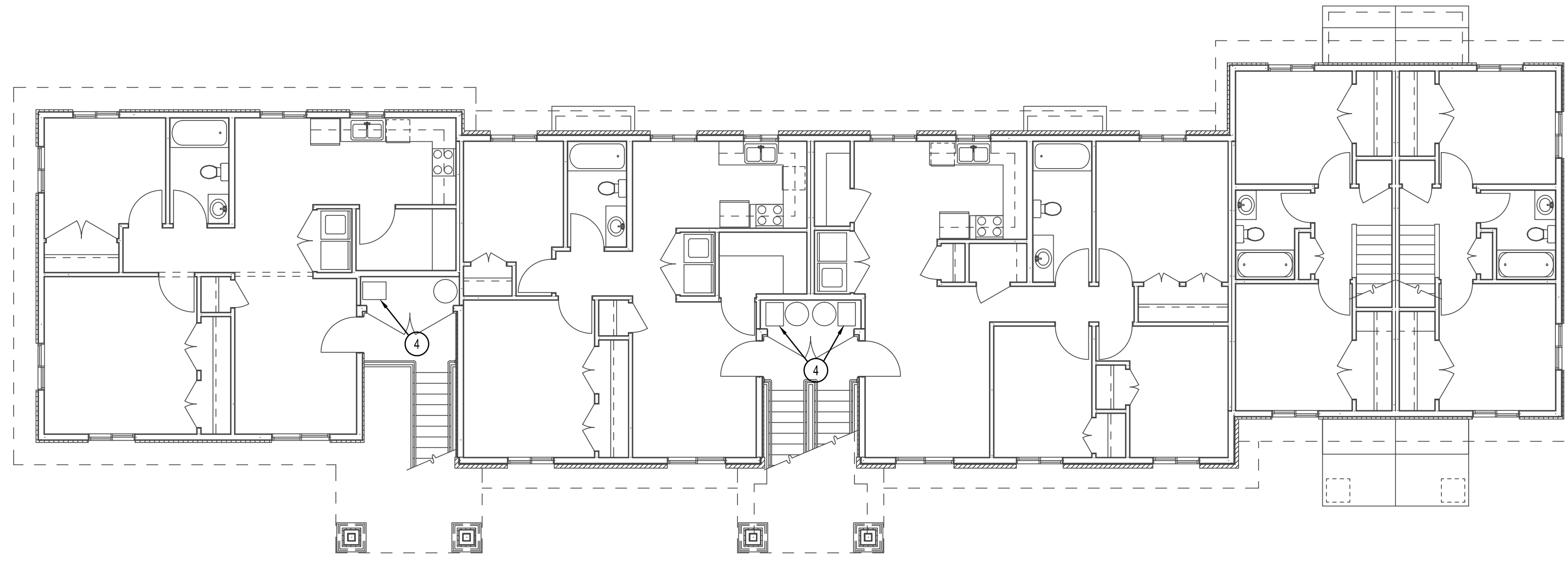


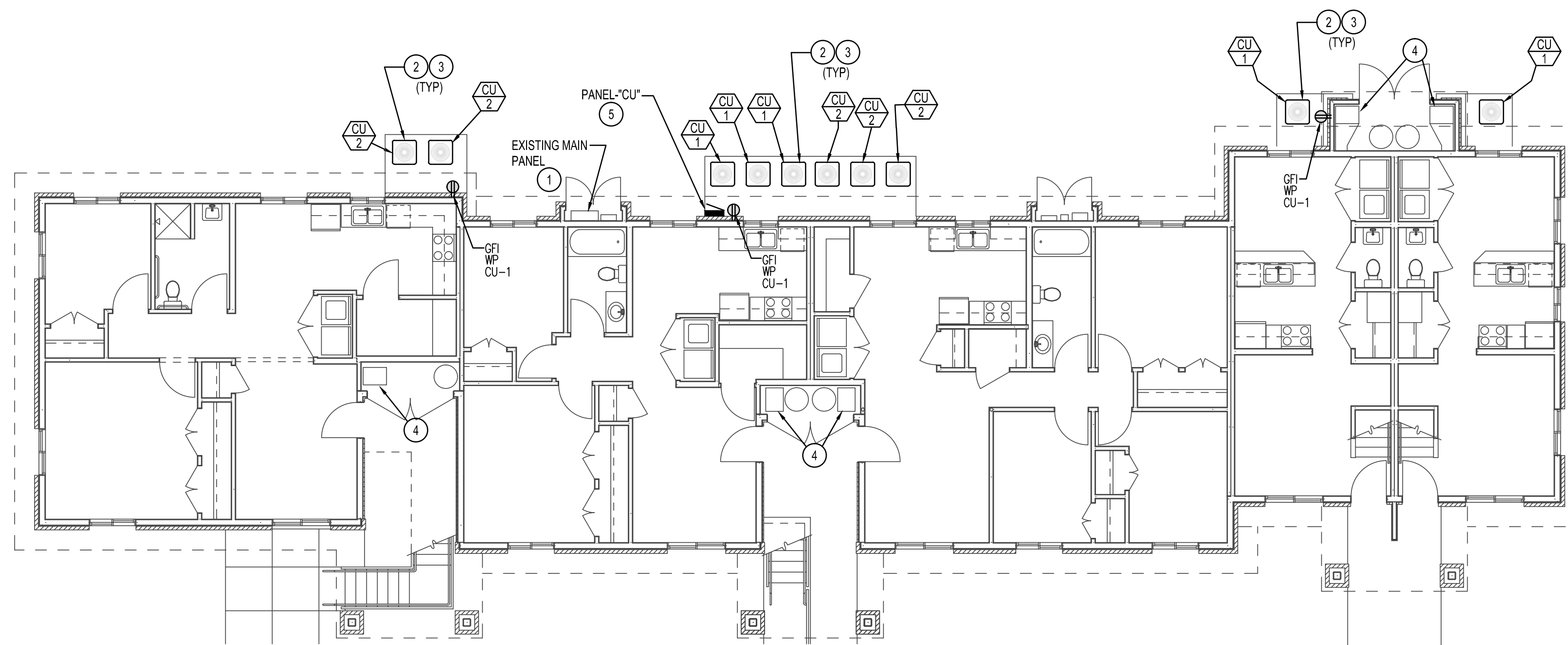
3RD LEVEL BUILDING #13 & 15 - POWER

SCALE: 1/8" = 1' - 0"



MAIN LEVEL BUILDING #13 & 15 - POWER

SCALE: 1/8" = 1' - 0"



MAIN LEVEL BUILDING #13 & 15 - POWER

SCALE: 1/8" = 1' - 0"

KEY NOTES

- 1 INSTALL A 2" x 3-1/2" x 3/4" GROUND TO NEW PANEL "CU". CONNECT TO SPARE LUG ON LOAD SIDE OF MAIN BREAKER. FEEDER LENGTH SHALL NOT EXCEED 25FT. POSITION PANEL "CU" ACCORDINGLY.
- 2 PROVIDE AND INSTALL 3/4" x 2-1/2" x 1/2" GROUND FROM 30A 2P BREAKER TO EACH COND. UNIT. PROVIDE A LOCAL DISCONNECT FOR EACH UNIT NOT IN LINE OF SIGHT TO PANEL "CU".
- 3 PROVIDE AND INSTALL A 1/2" CONDUIT FROM COND. UNIT TO RESPECTIVE FURNACE FOR CONTROLS. FOLLOW REFRIGERATION PIPING.
- 4 CAREFULLY DISCONNECT EXISTING FURNACE FOR REMOVAL. PROTECT, MAINTAIN AND/OR REESTABLISH SERVICE DISCONNECT AND CIRCUIT TO NEW FURNACE. MAKE ALL REQUIRED CONNECTIONS.
- 5 PANEL "CU" FEEDER ROUTING SHALL BE ROUTED UNDERGROUND FROM MAIN BREAKER. ALL EXPOSED CONDUIT SHALL BE RGC TAPED AND WRAPPED WHERE IN CONTACT WITH EARTH OR CONCRETE.



**Engineered Systems Associates
Mechanical Engineers**

Dwayne Suckweeks
1355 East Center - Pocatello, Idaho 83201
Phone: (208) 233-0501 Fax: (208) 233-0529 email: esa@engsystems.com

AIR CONDITIONING FOR:
BYU-IDAHO VILLAGE APARTMENTS
REXBURG, IDAHO

PROJECT:

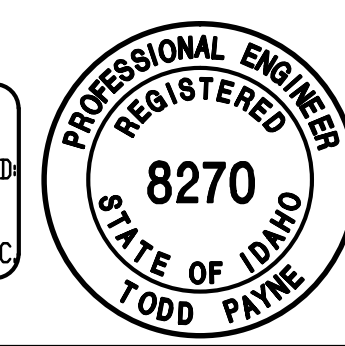
SHEET TITLE:
BLDGS. #13 & 15 ELECTRICAL PLANS

SHEET:

DRWN. BY: MP	CHK. BY: TP
JOB NO. 18069	DATE: DEC. 2018

SHEET:
E1.5
OF:

ORIGINAL SIGNED BY:
TODD E. PAYNE
DATED ORIGINAL SIGNED:
1-7-2019
DN FILE AT:
PAYNE ENGINEERING INC.



P.E. JOB #1894

IPAYNE
Engineering Inc. Consulting Engineers
1623 E. Center
Pocatello, Idaho 83201
tel (208) 232-4439
www.payneengineeringinc.com

I:\ES\SERVER\Payne Engineering Data\2018\BYU Village Apartments - 180710_Working Drawings\1804E1.dwg Jan 07, 2019 - 12:09pm